

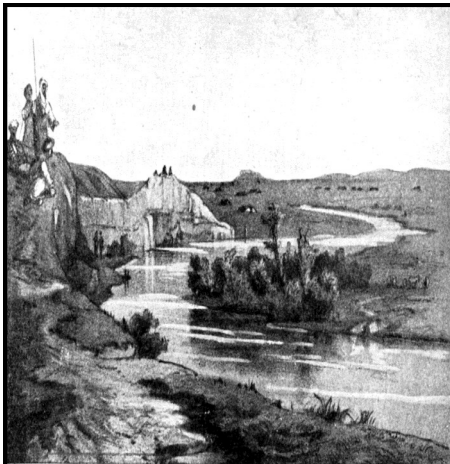
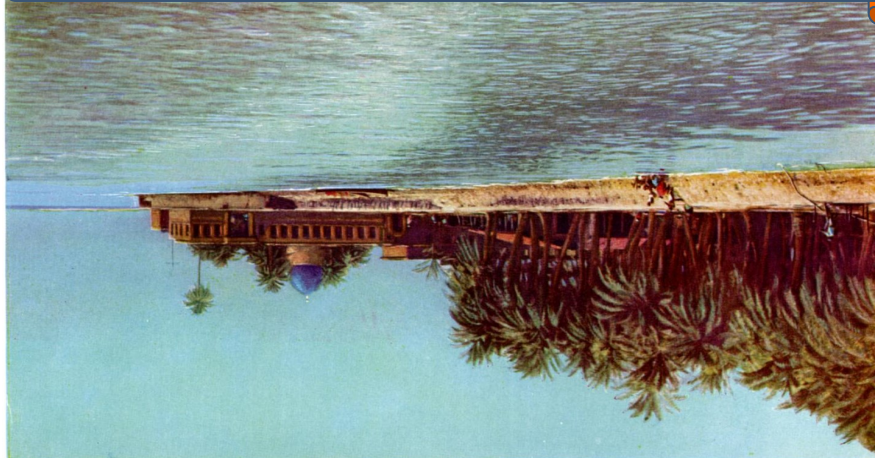
# MESOPOTAMIA

The ancient Greeks called this area Mesopotamia meaning "between the rivers". It was home to the Sumerian, Assyrian and Babylonian civilizations.

Mesopotamia was the birthplace of writing and this region is sometimes called the cradle of civilization.

Most of ancient Mesopotamia lay within the borders of modern Iraq. At times it also extended into parts of what is now Turkey, Syria and southwestern Iran.

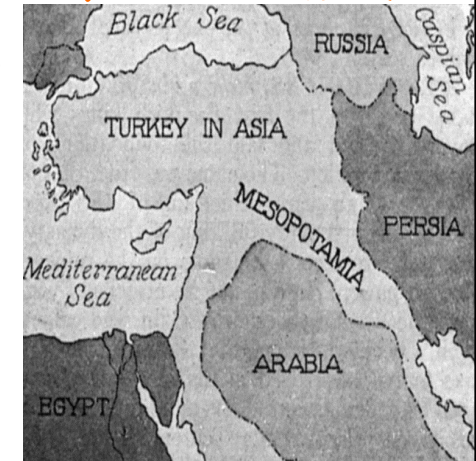
Much of the region is now hot desert, but many areas were fertile long ago.



Cut out as one unit. Fold in right and left sides and top page will hang down and over side pages.

Glue this part to your page.

*Where was it?*



*What does it mean?*

Write in your own information or use the information given. Here are a few websites with some helpful information

[Two Rivers Ran Through It](#)

[Jaconline - Mesopotamia](#)