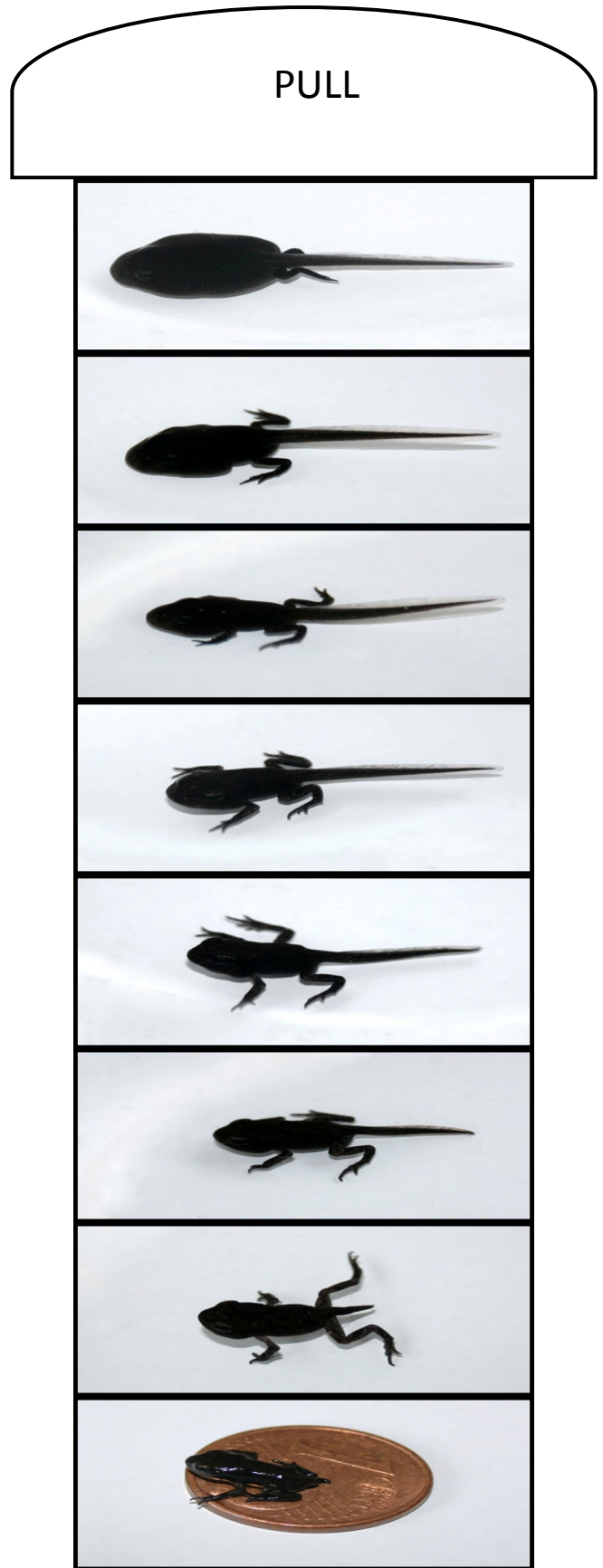


Cut out this rectangle for pull tab

Metamorphosis

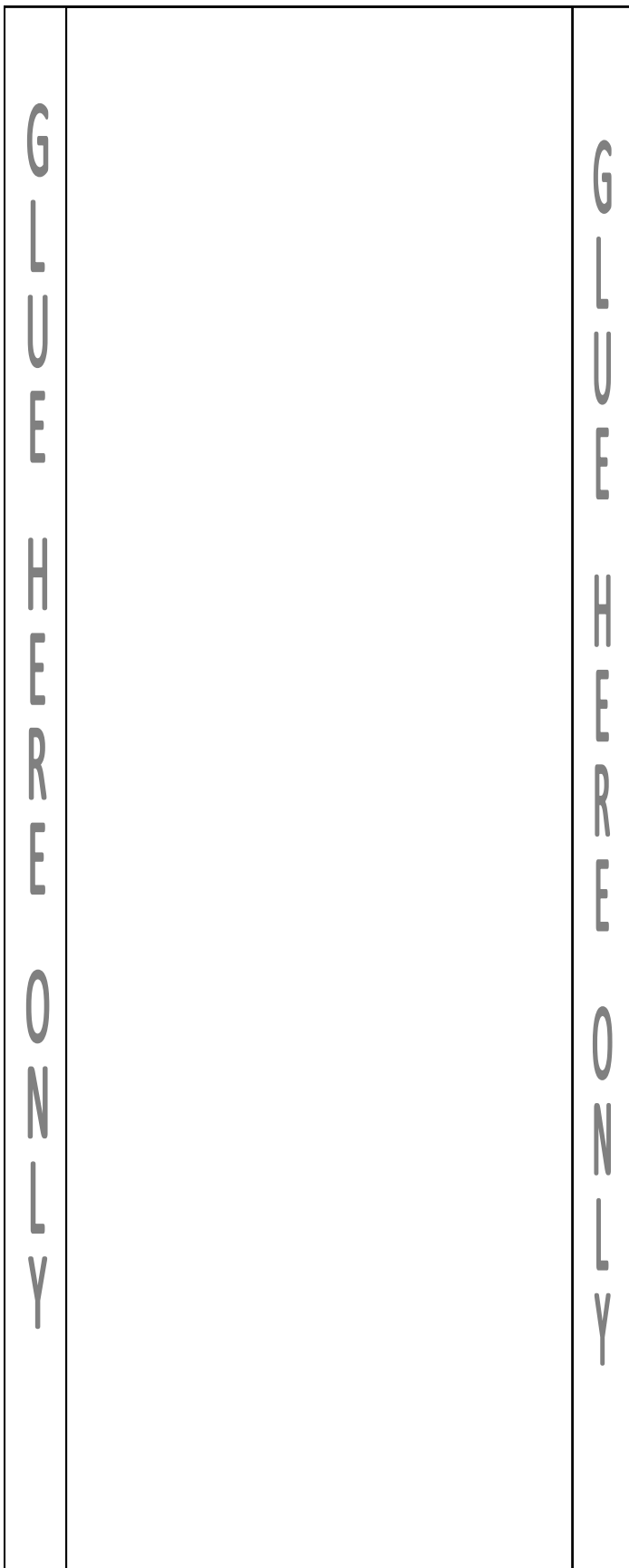


Piece A



Pull Tab

Pull Tab Book



Piece B

For this book it is better to use card stock for all the pieces.

Cut out all three pieces. Be sure to cut out the rectangle for the “window” on Piece A as well.

I find that if the pull tab book has a day or so to dry, then it’s easier to work with the pull tab.

Place Glue **ONLY** on side parts of Piece B as indicated. Note it is important to glue **as close to the inside line** on both sides as possible. This will make your tab pull in/out easier if you take time to carefully place your glue. A glue stick is good, a mini angled paint brush that has been dipped in glue works real nice as well. I have used both with no problems.

Note: Do not get any glue at the very bottom inside of piece B. The pull tab rests there and it will need to be kept dry.

Then carefully place Piece A onto Piece B. Right away press the outside edges to form a strong seam all the way around. And at the **same time** start using something like the eraser end of a pencil to stick in the middle of the book to be sure the inside middle of your book is staying open to form a pocket.

By working with it like this, your pull tab will not get stuck as you use it. Too, it will pull up and down easier.

If you did not glue real well, you can always staple, but it looks so much nicer and cleaner by adding plenty of glue, allowing it to dry sufficiently and working with your book off/on so it forms a nice easy pocket.