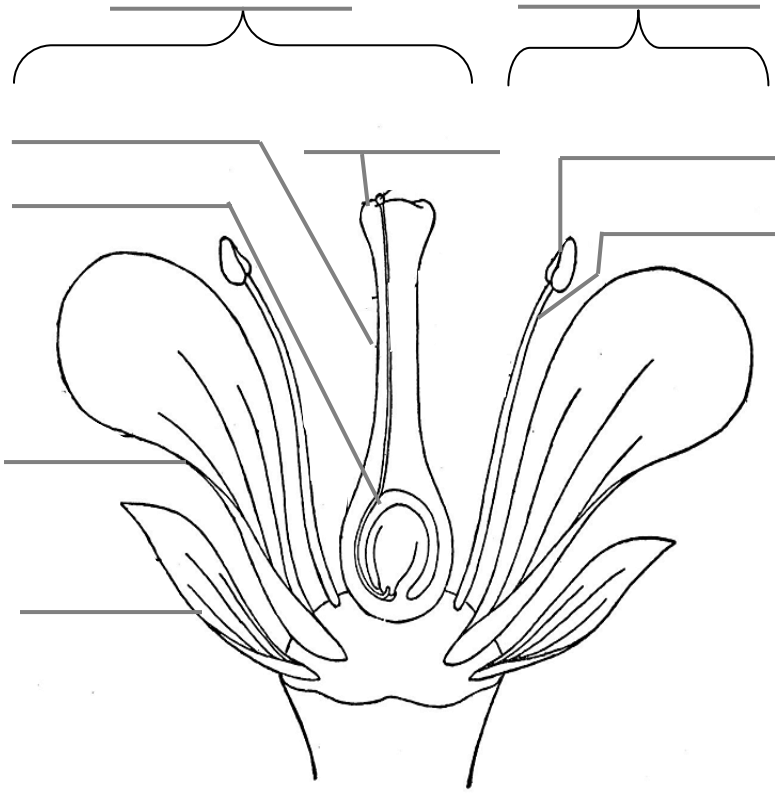


Important to the apple tree

Label the parts of a flower.
Look at next page for answer key.



Parts of the flower



Apple trees are deciduous trees. Deciduous trees have green leaves and lose their leaves in fall and then grow them back in spring.

Write some of your own facts in this flip book or use some of the facts given.

Fold over and cut to form two tabs. Be sure not to cut all the way through tabs. Cut only on solid line between tabs.

Conifer trees have leaves that are green needles and most, but not all keep them all year long. An example of this tree is the pine.

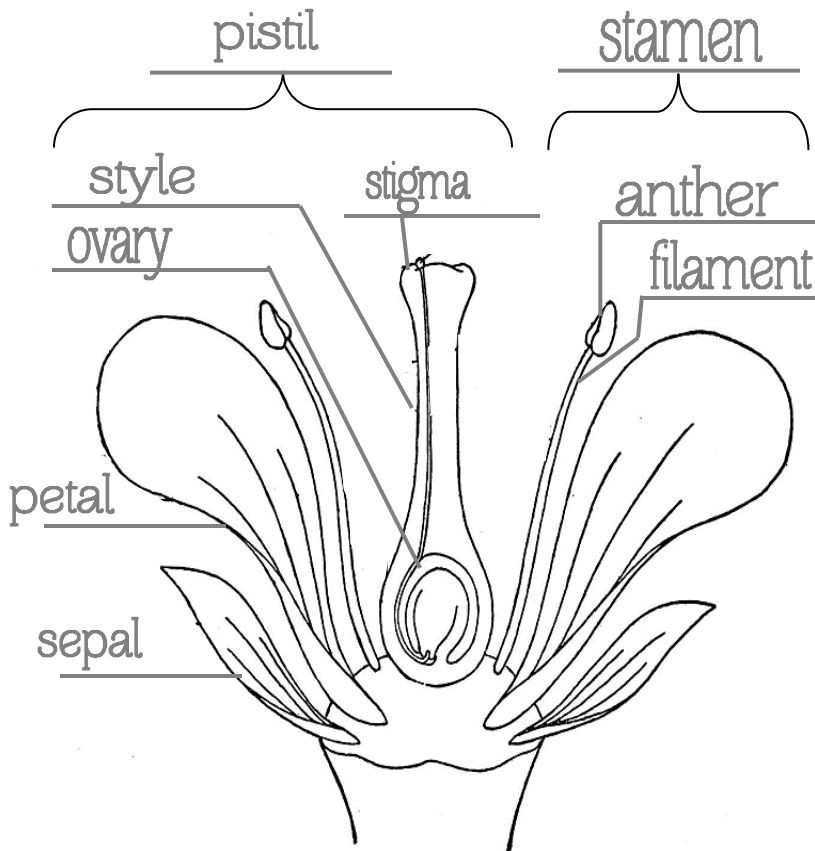
The apple tree is what kind of tree?



deciduous
{gymnosperms}



conifer
{angiosperms}



Though the forbidden fruit in the Book of Genesis is not identified, popular Christian tradition has held that it was an apple that Eve coaxed Adam to share with her. This may have been the result of Renaissance painters. Read more [here](#).

Write a few facts about it and even reference Genesis 2:9 and 2:17 on the lines provided and glue inside match book. Fold over.

forbidden fruit



Who said
it was
an apple?