

Go over rain forest opposites. Cut out and play match up.

You have several choices for storing it.

Simply place all pieces in the storage pocket on the last page separately, or

Staple the pieces at the top with title page on top and place in pocket, or

Make a small book with pieces on last page. Staple in two places on the left side.

Note: The cover is a little larger in size so that the pages can be centered in it and stapled and so that it will cover over all the pages.

OR

Don't use pocket at all and simply staple it on to your book.

Answers:

night and day in the rain forest.

jaguar fast, sloth slow

trees in the rainforest is full, deforestation is empty

desert is dry, rainforest is wet

bird in the barrel and bird out of the barrel



night



day



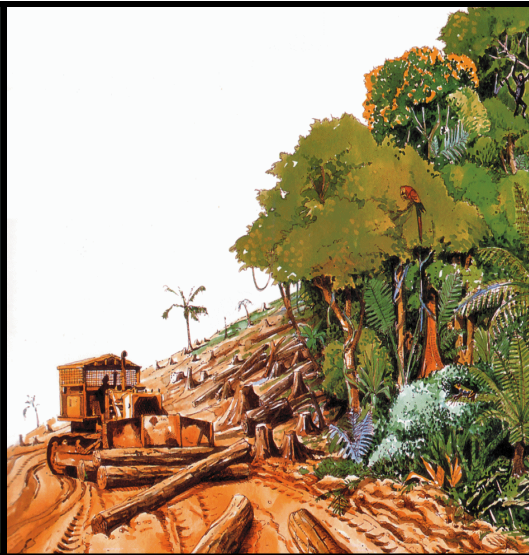
fast



slow



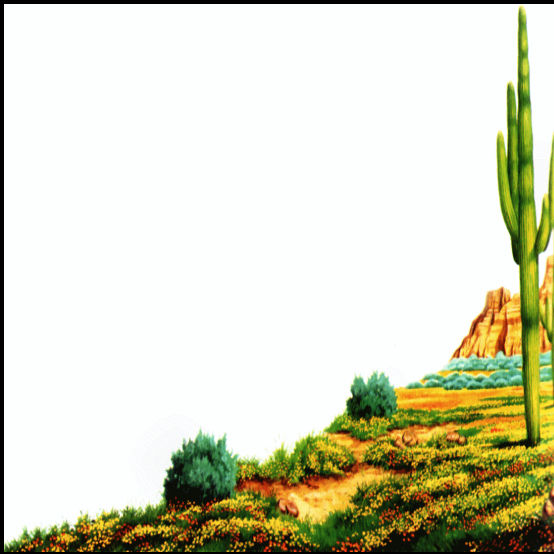
full



empty



in



dry



wet



out

